

Bellair

Adventure Guide



Group Charters & Travel with
Bellair Charters



www.bellaircharters.com • 1.866.BELLAIR

Benefits of Group Travel

- * Eliminate pressures of scheduling and logistics
- * Leave the organizing to someone else
- * Save money
- * Save time
- * Travel with like-minded people who share your same interest and excitement about your particular destination
- * Free yourself of parking, driving, traffic and navigation hassles
- * Travel safely, with professional, courteous drivers and well-maintained equipment
- * Enjoy cruising in the HOV lane, and being dropped off / picked up right at the door of the event venue
- * Travel in an environmentally-friendly manner. (Using a motorcoach can take as many as 57 cars off the road.)
- * Get to know your colleagues, clients, friends or family members in a relaxed setting
- * Use the travel time for reading, resting or sightseeing
- * Make new friends
- * In business group travel, take advantage of a great opportunity for networking and learning
- * Enjoy a seamless traveling experience
- * Relax!

Map of Western Washington



Charter Trip Ideas – Seattle

Seattle is a two hour ride from Bellingham and Anacortes and one and a half hour ride from Mount Vernon (depending on traffic).



Museum of Flight

Experience the story of flight from the dawn of aviation to the Space Age. The museum features 54 of the world's most awe-inspiring airplanes-authentic and in mint condition. Walk within inches of the amazing Blackbird spy plane or board America's first presidential jet-the original Air Force One.

www.museumofflight.org

Visit the Museum and then have a meal in Seattle before returning home or stop in Edmonds, Everett or Marysville for a meal.



Pacific Science Center

The Pacific Science Center offers fun for the entire family. The center offers a variety of interactive exhibits, a planetarium, IMAX theaters, laser shows and a variety of special events throughout the year.

www.pacsci.org

Visit the Pacific Science Center and then have a meal in Seattle before returning home or stop in Edmonds, Everett or Marysville for a meal.



The Space Needle and Pike Place Market

The Space Needle, a Seattle tradition for over 35 years offers extraordinary futuristic design and colorful history. Just 43 seconds in a glass elevator from ground level to 520 feet above Seattle. A 360-degree view of the most incredible panoramic scenery the Pacific Northwest has to offer.

www.spaceneedle.com

The Pike Place Market is a special place. This nine-acre historic district hosts nine million visitors each year who come to experience the unique sites and sounds of Seattle's downtown public market. It is a great place to shop and to find entertainment (like fish tossing).

www.pikeplacemarket.org

Visit the Space Needle and Pike Place Market and then have a meal in Seattle before returning home or stop in Edmonds, Everett or Marysville for a meal.



Experience Music Project (EMP) and Science Fiction Museum

EMP is a one-of-a-kind music museum combining interactive and interpretive exhibits to tell the story of the creative, innovative and rebellious expression that defines American popular music. Featuring a world-class collection of artifacts, unique architecture by Frank

O. Gehry, state-of-the-art technology, and exciting interactive presentations, EMP will encourage visitors of all ages and backgrounds to experience the power and joy of music in its many forms.

www.emplive.org

The Science Fiction Museum and Hall of Fame (SFM) is a 501(c)(3) nonprofit organization created to inspire new generations to reach beyond the present, imagine the future and explore the infinite possibilities of the universe.

The first museum devoted to this dynamic and far-reaching genre, SFM combines artifacts and information in evocative environments, immersing visitors in science fiction's "alternative worlds." Witness how science fiction touches all forms of artistic expression and reframes the complexities of science, art, culture and the humanities - helping give visitors new insights into themselves and their world.

The museum is also home to the Science Fiction Hall of Fame, honoring the legends and luminaries that have shaped humanity's visions of the future. The initial 36 members of the Hall of Fame represent major figures in the establishment of the science fiction genre - from Mary Shelley and H.G. Wells to Sir Arthur C. Clarke and Robert Heinlein. New members will be inducted annually as SFM continues to celebrate the artists and thinkers that create the visions of tomorrow.

www.sfhomeworld.org

Visit the Museums and then have a meal in Seattle before returning home or stop in Edmonds, Everett or Marysville for a meal.



Woodland Park Zoo

Considered one of the country's ten best zoos, Woodland Park Zoo's 92 acres feature over 300 animal species and 1000 plant species in award-winning naturalistic exhibits. www.zoo.org

Visit the Zoo and then have a meal in Seattle before returning home or stop in Edmonds, Everett or Marysville for a meal.



Seattle Aquarium

The Seattle Aquarium features more than 380 species of fish, invertebrates, birds and marine mammals, and underwater Dome and a Discovery Lab. Visitors can witness the entire life-cycle of Pacific salmon in the world's only aquarium-based salmon ladder and fish hatchery. The Aquarium also offers trips to see orcas, eagles, gray whales and more in the wild. www.seattleaquarium.org

Visit the Aquarium and then have a meal in Seattle before returning home or stop in Edmonds, Everett or Marysville for a meal.



Hiram M. Chittenden Locks

Visitors to the Hiram M. Chittenden Locks can enjoy the beautiful Carl S. English, Jr Botanical Garden, watch the boats, visit the fish ladder and explore the exhibits and bookstore in the Visitors Center. www.nws.usace.army.mil/PublicMenu/Menu.cfm?sitename=lwsc&pagename=mainpage

Visit the Locks and then have a meal in Seattle before returning home or stop in Edmonds, Everett or Marysville for a meal.



The Burke Museum

Located on the campus of the University of Washington, the Burke Museum is a major national resource for information on the natural and cultural history of the Pacific Northwest. www.washington.edu/burkemuseum/

Visit the Museum and then have a meal in Seattle before returning home or stop in Edmonds, Everett or Marysville for a meal.



Tillicum Village

Tillicum Village is a place where family and friends can come and explore, while enjoying an exquisite meal of freshly prepared salmon, and view Native American dances. Come for the excellent dinner and show, and stay afterwards to examine authentic carving exhibits or explore Blake Island itself. www.tillicumvillage.com



Museum of History and Industry

MOHAI is the definitive place for everyone with a passion, curiosity, or question about the history of Seattle and King County. www.seattlehistory.org

Visit the Museum and then have a meal in Seattle before returning home or stop in Edmonds, Everett or Marysville for a meal.



Ride the Ducks

You haven't seen Seattle until you've seen it from a Duck! Our hilarious, Coast Guard-certified maritime captains will take you on a musical tour of the Emerald City. Amphibious World War II vehicles will show you Seattle from both land and water! You'll see downtown

Seattle, Pike Place Market, historic Pioneer Square, Funky Fremont, then, SPLASH into Lake Union for a spectacular view of the city skyline, luxurious yachts, and Sleepless in Seattle Houseboats!

www.ridetheducksofseattle.com

Visit the Museum and then have a meal in Seattle before returning home or stop in Edmonds, Everett or Marysville for a meal.



Safeco Field Tour and Underground Tour

Safeco Field is the fabulous new home of the Seattle Mariners. Guests are treated to a 19.59-acre outdoor baseball park with real grass and a retractable roof. Tour one of the premier baseball facilities ever built, including areas of the ballpark that are not normally open to

the public: press box, luxury suites, field, dugout and visitor's clubhouse. Cameras welcome! (All areas are subject to availability depending on activities within the ballpark.)

http://seattle.mariners.mlb.com/sea/ballpark/safeco_field_tours.jsp

BILL SPEIDEL'S UNDERGROUND TOUR is a leisurely, guided walking tour beneath Seattle's sidewalks and streets.

www.undergroundtour.com

Have a meal in Seattle between tours.



Seattle Sounders Soccer Camps

Seattle Sounders Soccer Camps' goal is to provide children with the best coaching available so that learning the game and skills of soccer is enjoyable and fun. Through encouragement, motivation and a positive fun environment, children receive a valuable camp experience. Seattle Sounders Soccer Camps offer some of the best coaching in the Northwest. Many of the coaches are current and former professional players, Sounders Women's team players and top college players. All of the men and women are highly trained in teaching the skills of the game while making the kids laugh and enjoy their time at

camp.

www.seattlesounders.net/summercamps.php



ACT Theater

A Contemporary Theatre brings the best in contemporary theatre to Seattle's most discerning and daring audiences. It is what we do.

www.acttheatre.org

Have a meal before or after the performance depending on the time of the show.



Frye Art Museum

The museum displays 19th and 20th century European and American paintings and changing exhibits of traditional and contemporary realist art. The museum also features an education wing offering art workshops.

www.fryeart.org

Charter Trip Ideas – Whatcom County, WA



Semiahmoo Resort

Feel the exhilaration of tee-off and the triumph of a game well played while absorbing clean air and awe-inspiring views of snow capped peaks. Two courses alternate on odd/even days for public play: Semiahmoo, an 18-hole course designed by Arnold Palmer, is ranked as one of

the best in the nation. Loomis Trail, an elite course designed by Graham Cooke, has the second highest slope rating in the state, with water on every hole.

Semiahmoo Resort also features full spa treatments and luxury accommodations.

www.semiahmoo.com



The Chrysalis Inn & Spa

Named one of the “Best Inns in the Nation” by Travel & Leisure magazine, this 5,000 square-foot spa is tucked into an intimate 43-room inn. It features eight treatment rooms, including one with a 214-jet hydrotherapy tub, and offers an extensive menu of services.

www.thechrysalisinn.com



Silver Reef Casino

Try your luck at one of our area’s many casinos! Silver Reef brings more than 135,000 square feet of exhilarating gaming, exceptional dining, a luxurious hotel and spa, and enjoyable entertainment – all in a bright and spacious new setting. Dining includes the Steak House and Kulshan Terrace Bar, Red River Cafe, with a diverse menu and buffet, Portage Bay Bar & Lounge, with live entertainment, and the Gold Rush Bakery & Deli for a quick bite.

www.silverreefcasino.com



Whatcom Museum of History and Art

“One of the state’s finest” museums as rated by the Smithsonian Guide to Historic America, this museum is a landmark and regional treasure. The Whatcom Museum campus is composed of four buildings, featuring exhibitions of contemporary art and regional history, as well as an award-winning Children’s Museum. The Museum’s collection holds more than 200,000 artifacts of regional importance, including a vast photographic archive.

www.whatcommuseum.org



Lynden Pioneer Museum

The historic collection at this museum showcases pioneer agriculture, transportation and vehicles, natural resources, military and rural Victorian lifestyles. The museum features a replica of early-1900s Lynden shops and Dutch influence, which is still the foundation of the town today.

www.lyndenpioneermuseum.com



Western Washington University Gallery & Outdoor Sculpture Tour

Home to one of the largest collections of outdoor sculpture on the west coast, the WWU Sculpture Collection features 24 works by regional, national and international artists focusing on the themes of nature, culture, human scale, personal perceptions and spatial dynamics. The sculptures are displayed from the Western Gallery Plaza throughout the campus.

<http://westerngallery.wvu.edu/sculpture.shtml>



The Upfront Theatre

Established by comedian Ryan Stiles (Drew Carey Show, Whose Line Is It, Anyway), the Upfront Theatre is a 140-seat cabaret style venue that offers live improv comedy every Friday and Saturday evening. Performers from all over the northwest as well as local talent present many styles of improv comedy ranging from short form games to one act improvised plays, musicals, and competitive improv.

www.theupfront.com



Mount Baker Theatre

The Mount Baker Theatre in downtown Bellingham's Arts District is the largest performing arts facility of its kind north of Seattle. A beautifully restored 1927 architectural treasure, listed on the register of National Historic Places, the theatre is dedicated to showcasing some of the best live performing artists on both the professional and community levels for audiences in the

North Puget Sound area and the Lower Mainland of British Columbia.

This movie palace of Moorish style architecture is today a vibrant setting for compelling

entertainment. With rousing family programs, dazzling Broadway shows, renowned classical artists and explosive rock acts, the Mount Baker Theatre ignites the imagination of audiences of all ages. The Mount Baker Theatre spotlights the live arts that are the pulse of the region's quality of life. Come to a Free Tour at the Mount Baker Theatre and see for yourself why it's still considered to be the region's premier performing arts facility.

www.mountbakertheatre.com



Lynden - Dutch Town

Located north of Bellingham on Highway 539, Lynden clings passionately to its Dutch roots. Lynden is Washington State's largest Dutch settlement, with approximately 30 percent of its residents of Dutch ancestry, as well as the heart of Whatcom County's farmland. Upon reaching the four-block span of Front Street, known as Dutch Old Town, visitors are greeted by a 72-foot tall working windmill that towers over the street. It houses a gift shop, restaurant and one wing of the Dutch Village Inn. A canal meanders through the Dutch Village Mall featuring 18

shops specializing in Dutch lace, wooden shoes, delftware and other imports. Menu selections are typically Dutch and Dutch bakeries abound.

www.lynden.org



Mount Baker Wilderness & North Cascades National Park

Mount Baker, a breathtaking 10,778 ft. glacier-covered active volcano, holds the world record for the most annual snowfall. Mount Baker Highway winds its way up through picturesque wilderness, up to Artist Point and Mt Shuksan, the most photographed peak in the US.

Mount Baker Ski Resort offers skiers and snowboarders some of the finest terrain and the best snow conditions in the west.



Whatcom County Farm Tours

Experience firsthand Whatcom County's agricultural heritage by touring one of the area's many working farms. Whatcom County boasts over 145,000 acres of farmland, and over 1400 farms. More than 65% of the nation's red raspberries are grown here. Just a few of the farms that offer tours are Red Barn Lavender Farm, BelleWood Acres, Boxx Berry Farm and Grace Harbor

Farms.



Whatcom County Wine Tours

Enjoy a relaxing afternoon of winetasting by visiting two or three outstanding Whatcom County wineries. At each locale, you'll meet with the winemakers and enjoy tasting samples of their various wines. A few of the more popular wineries in the area are Mt Baker Vineyards, Vartanyan Estate Winery, Dakota Creek Winery and Samson Estates Winery. Enhance your trip with an on-

board wine guide/advisor, a nutritious box lunch, water and snacks, and perhaps even some locally-made chocolate.



Birch Bay Water Slides - Birch Bay, WA

Birch Bay Waterslides offers a smorgasbord of water recreation, ideal for adventure-seekers and sun-lovers. Take a day to wander around the four-acre park and stop by any of the nine slides for a thrill, especially the exhilarating 60-foot hydrocliff dropslide. There is also a lazy river ride, several kiddie slides and a huge hot tub.

Take a break from the water and join a team for beach volleyball or head for food from the concession stand. www.birchbaywaterslides.net

Charter Trip Ideas – Tacoma WA

Tacoma is a three hour ride from Bellingham and Anacortes and two and a half hour ride from Mount Vernon (depending on traffic).



Museum of Glass

Housed in a striking building distinguished by its 90-foot-high cone sheathed in diamond-shaped stainless steel tiles, this contemporary art museum features 13,000 square feet of exhibition space dedicated mainly to changing exhibitions of works executed in glass. Within the cone is an amphitheater in which visitors can watch artists work with molten glass. Outside, winding around the cone, a broad staircase leads to the rooftop where three outdoor plazas feature reflecting pools and art installations. From Pacific Avenue, pedestrians may access the museum via the 500-foot-long Chihuly Bridge of

Glass.

www.museumofglass.org



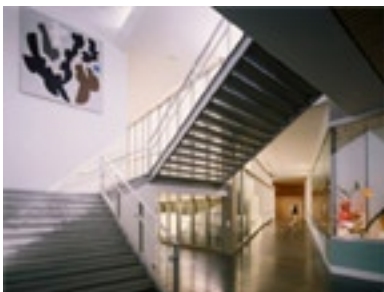
Chihuly Bridge of Glass

Chihuly Bridge of Glass span I-75 between the Museum of Glass and Union Station. This foot-bridge features three installations of Dale Chihuly's glass art. The ceiling of the Seaform Pavilion suspense more than 2,300 colorful glass objects above the heads of pedestrians. The two translucent, ice-blue Crystal Towers rise 40 feet above the bridge's midpoint. Farther along, the Venetian

Wall showcases 109 delicate Chihuly sculptures.

www.chihuly.com/bridgeofglass

Three hour ride from Bellingham and Anacortes and two and a half hour ride from Mount Vernon (depending on traffic).



Tacoma Art Museum

The museum presents rotating art exhibitions. A large collection of local artist Dale Chihuly's glass art is on view. The Open Art Studio allows visitors of all ages to create their own art.

www.tacomaartmuseum.org



Washington State History Museum

The museum offers an overview of the Evergreen State's past and present. Hands-on exhibits, walk-through settings and interactive computers depict the state's natural setting, the lifestyle and culture of the first inhabitants, exploration and settlement of the region, and the people and events that helped shape the state.

www.wshs.org

Three hour ride from Bellingham and Anacortes and two and a half hour ride from Mount Vernon (depending on traffic).



Point Defiance Zoo and Aquarium

Point Defiance Zoo and Aquarium features animals from the pacific rim area, including Asian elephants, beluga whales, a Pacific walrus, polar bears, sea otters, sharks and snow leopards. Habitats feature the Arctic's tundra, Puget Sound's rocky shores and the tropics of the South Pacific. The Asian Forest Sanctuary provides a lush habitat for its denizens, which include Sumatran tigers, siamangs and Asian elephants. The North Pacific Aquarium offers a glimpse of Puget Sounds' marine life along with a sea horse exhibit. The Discovery Reef Aquarium displays tropical fish and sharks.

www.pdza.org



Wild Waves Enchanted Village

Wild Waves is a Six Flags Theme Park in Federal Way. This 50-acre family amusement park features Enchanted Village, which offers 32 rides including Timberhawk, the state's largest wooden roller coaster. The park also includes Wild Waves Water Park featuring ten waterslides, a 24,000 square foot wave pool, two speed slides and a raging river ride.

www.wildwaves.com/parks/enchantedvillage//index.asp

Charter Trip Ideas – Marysville / Arlington / Stanwood

Marysville, Arlington and Stanwood are a one hour ride from Bellingham and Anacortes and a half hour ride from Mount Vernon (depending on traffic).



The Outback Christmas Tree and Kangaroo Farm

“People just love our tours,” says Ray Strom, your host at the farm. He and wife Joey enjoy leading about four scheduled tours a day, more when they fulfill a request for a private tour. And not only does The Outback offer tours of the premises, but sales of the wallabies, wallaroos and kangaroos which bounce about the place. There is also a gift shop for souvenirs of this unique experience.

www.christmastreesandroos.com



Seattle Premium Outlets/ Tulalip Casino

Seattle Premium Outlets has a variety of stores and a food court. The wide variety of shopping options includes designer fashions, shoes, fine leather & luggage, accessories, housewares, home furnishings, gifts and specialty items.

Tulalip Casino is all about fun! You can play over 2000 of the latest slots and 50 Table Games, plus a special non-smoking Poker Room, Keno and Bingo. For entertainment fun, there’s live music and comedy in the Canoes Cabaret, plus a large outdoor Amphitheatre featuring celebrity shows. The Taste of Tulalip is offered in three restaurants and a huge buffet.

www.premiumoutlets.com/outlets/outlet.asp?id=71

www.tulalipcasino.com



Warm Beach - Lights of Christmas

Dazzling light displays, the smell of fresh hot donuts, the holiday sounds of Victorian Carolers, and so much more make *The Lights of Christmas* the perfect holiday destination for your family, your friends, and your group. Dinner Theatre features a fabulous 6-course meal and live theatre in our Baylight Room. Every Sunday in December features a special Dessert Matinee followed by a fabulous

evening to enjoy *The Lights of Christmas* General Admission.

<http://warmbeach.com/articles.php?tPath=36>

Charter Trip Ideas – Vancouver BC



Vancouver Planetarium

The Vancouver Planetarium, also known as the H.R. Macmillan Space Centre, is located by the Vancouver Museum in Kitsilano's Vanier Park and is a fun place to go on a rainy day. There are always several shows to see in the Planetarium; the observatory, where you can see planets yourself; laser shows; and the virtual simulator, which is a sort of small virtual roller coaster.

www.hrmacmillanspacecentre.com



Vancouver Art Gallery

Monet to Dali: Modern Masters from the Cleveland Museum of Art

June 11 to September 16, 2007

Monet to Dali represents the most comprehensive showing of European painting and sculpture in Vancouver in more than half a century. Drawn from the superb collections of the Cleveland Museum of Art, the exhibition consists of more than 80 paintings, drawings and sculpture that demonstrate key examples from the European modernist movement. Most notably, the exhibition includes key works by Manet, Monet, Cézanne, van Gogh, Rodin, Picasso, Dali and other renowned artists. Together, the works in this stellar collection illuminate the breadth of creativity in one of the most extraordinary epochs in the history of Western art.

www.vanartgallery.bc.ca



Museum of Anthropology

MOA houses some 35,000 ethnographic objects, as well as 500,000 archaeological objects in the collection of UBC's Laboratory of Archaeology. The ethnographic materials derive from many parts of the world, including the South Pacific, Asia, Africa, Europe, and the Americas. Permanent exhibits emphasize the First Nations of coastal British Columbia. (There are approximately 6,000

objects from B.C's First Nations in MOA's collections.)

www.moa.ubc.ca



Greek Festival – Vancouver, June 30 - July 9

Festivals have been a religious and cultural tradition of Greek society since Ancient times. Primarily held to honor or receive favor from the gods or to celebrate the changing of the seasons, this ancient rite was

characterized by music, dance, athletic competitions, wine, and of course, food. It was an excuse for the entire community to join and celebrate the ideals of family, friendship and philoxenia generosity towards strangers. The most famous of the ancient festivals was the Olympic Games.

www.greeksummerfest.com

Focus on Adventure



Fraser River - Power Rafting

Take this one-day adventure to experience the mighty Fraser River and some of the largest commercially rafted whitewater in North America.

Our large power rafts let you ride through the scenic Fraser Canyon in comfort and safety. Enjoy the majestic views, wildlife and cultural history on this diverse and incredible waterway. Challenge the rapids at Scuzzy Rock, China Bar and more. Pause midway for a well-deserved rest after conquering the unforgettable rapids at Hell's Gate. Enjoy a buffet lunch served on a secluded riverside beach, where you can swim, hike or just relax in the sunshine.

www.fraserraft.com



Squamish - Whistler

Welcome to Squamish, BC - the "Outdoor Recreation Capital of Canada".

This spectacular seaside, mountain community is located at the tip of Howe Sound just 45 minutes north of Vancouver and 45 minutes south of Whistler, British Columbia. Surrounded by the dramatic Coast Range mountains and Pacific Ocean, Squamish offers you and your family world class recreation, including mountain biking, rockclimbing, kayaking, fishing, kiteboarding, birdwatching and windsurfing, just to name a few.

www.district.squamish.bc.ca



Grouse Mountain - Tandem Paragliding

Soar high above mountain peaks and experience the incredible adventure of tandem paragliding.

Take flight from the top of Grouse Mountain with a professional paragliding pilot. You will soar free above the mountains, for awe-inspiring views of the city of Vancouver and beyond. Gently descending in Cleveland Park at the base of the

mountain, your flight through the skies will leave you enthralled and enchanted.

www.grousemountain.com

Focus on Day Trips



Capilano Suspension Bridge

Treetops Adventure is the newest of Capilano Suspension Bridge's attractions and the first venue of its kind in North America, offering a squirrel's eye view of a thriving coastal forest. Recognized for extraordinary innovation with national and provincial tourism and engineering awards, a walk on Treetops Adventure has emerged as one of Vancouver's quintessential activities.

www.capbridge.com



Granville Island

Granville island is a magical place and a must see for any visitor to Vancouver.

It is physically connected to the city by a causeway from the south that provides no hint of the treasures that await visitors. Its humble origins are philosophically far removed from what it has become, a sophisticated home to performing arts, art education, dining, artists' studios and workshops, art galleries and a fabulous public market that offers the widest array of fresh food in the Lower Mainland

as well as a favorite place for people to meet, eat and spend some time in a safe and relaxing environment.

www.granvilleisland.bc.ca



Gastown

Established the same year that Canada became a nation, Gastown grew into Canada's third largest city and one of its most cosmopolitan. But the Gastown district today retains its historic charm, independent spirit and distinctiveness. There's no mistaking Gastown for any other area of Vancouver, or of Canada for that matter.

www.gastown.org



Stanley Park - Vancouver Aquarium

Welcome to the Vancouver Aquarium, Canada's largest aquarium. As a non-profit organization we continually dedicate our efforts to the conservation of aquatic life through display, interpretation, education, research, and direct action. You can experience all of this and more when you visit us.

All the information you need to plan your visit to the aquarium is at the click of your mouse in the banner above. You can find out about hours, rates, directions, show times, amenities and services. Don't forget to check out our Aquarium Adventures page to find out how to get up close with our animals.

www.vanaqua.org



Totem Park

Situated just off the seawall beside the Brockton Oval cricket pitch are eight totem poles. Each has a story that breathes life into it. Each is connected to the land on which it stands in more than just a physical sense.

In 2001 an interpretive centre was established by constructing a separate structure housing working areas, lots of signage, a gift shop for related items and a refreshment outlet. The totem poles themselves were treated to an upgrade in the landscaping around them. More signage was put in place to deal with the stories related to each of them individually.

www.city.vancouver.bc.ca

Charter Trip Ideas – Vancouver Island, BC



Butchart Gardens

Enticing visitors to Vancouver Island since the early 1900s, these breathtaking gardens are now a designated National Historic Site. Starting with the Sunken Garden, once a limestone quarry, The Butchart Gardens offers 55 acres of spectacular beauty in every season. Spring features countless tulips, daffodils and hyacinths, with the glorious Rose Garden bursting into bloom in the

summer.

www.butchartgardens.com



National Geographic IMAX

You won't just see it at IMAX - you'll EXPERIENCE it. Whether it's exploring the last remains of the Titanic, immersed in the colour and culture of an ancient land or deep in the ocean swimming alongside one of the planet's largest creatures, the IMAX experience takes you places that you could never otherwise go.

www.imaxvictoria.com



Fisgard Lighthouse

Step inside a real working lighthouse - Canada's oldest west coast lighthouse - where colourful displays tell of ships wrecked and lives saved. Stroll along the ramparts of three coastal gun batteries built over a century ago. Look down the barrels of original guns, explore underground bunkers, and discover camouflaged searchlight emplacements.

www.fisgardlighthouse.com



Victoria Bug Zoo

Welcome to the amazing world of insects and spiders. A visit to this must see zoo offers visitors an excellent opportunity to view and experience multi-legged creatures from around the world in a safe, fun and friendly atmosphere. Get up close and personal with LIVE giant walkingsticks, alien-eyed praying mantids, hairy tarantulas and glow-in-the-dark scorpions, to name a few. Discover over 40 fascinating species including Canada's largest ant farm. The knowledgeable "bug guides" will reveal the exotic secrets of this hidden kingdom and provide a safe

animal handling experience for the more adventurous.

www.bugzoo.bc.ca



Empress Hotel

At the beautiful Fairmont Empress hotel, you'll feel like you're stepping into history! Experience true British society inside the authentic Victorian Tea Lobby at this renowned hotel while you enjoy an old English tradition-Afternoon Tea. The tradition of afternoon tea began in England in the 1700's as a working class effort to ward off hunger before the main dinner meal. Today, "Afternoon Tea" is enjoyed by both rich and poor and has become a standard affair in British society. At this important ritual, people come together to discuss current events and

lament their daily woes. Join us for afternoon Tea to take part in this historic, cultural tradition!

www.fairmont.com/empress



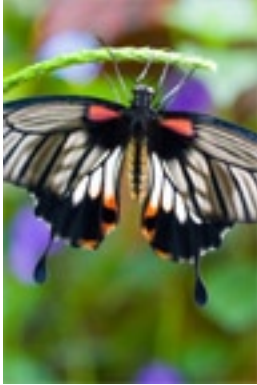
Craigdarroch Castle

Craigdarroch Castle is an 1890's mansion with exquisite stained-glass windows, woodwork and period antiques.

Built by wealthy coal baron, Robert Dunsmuir, Craigdarroch Castle is a stunning example of the finest architecture, materials and craftsmanship available in the Victorian era. See the spectacular oak staircase and

climb 87 steps to the Tower for the best views in Victoria. Self-guided tour translations available in: Chinese, Japanese, Korean, German, French and Spanish.

www.craigdarrochcastle.com



Butterfly Gardens

Experience the sights of hundreds of exotic butterflies flying free in an indoor tropical paradise. Sense the smell of flowering plants, delicate orchids and the rainforest that is home to fascinating birds. Hear the waterfalls as the stream flows for the koi and provides a home for flamingos. Friendly staff, guided tours, an art and gift store, attached restaurant and plenty of free parking will compliment your visit to Victoria Butterfly Gardens. Five minutes to the world famous Butchart Gardens.

<http://www.butterflygardens.com>



Hatley Park National Historic Site

Hatley Park National Historic Site offers a world of opportunities to visitors of all ages to discover heritage treasures, stroll through glorious gardens, and explore the scenic beauty of this seaside estate. Discover the 565-acre Edwardian estate containing a grand castle, formal period gardens, an old growth forest with walking trails, plus a seaside lagoon with bird watching opportunities.

<http://www.hatleygardens.com>



Royal London Wax Museum

The “World of Wax” originally opened in 1961. Displaying some ninety figures, this attraction establishes North America’s first exhibition of Josephine Tussaud wax figures from England.

In Year 2000, the Royal London Wax Museum has an inventory of some 300 wax figures that have been sculpted in England, the most recent of which is “The woman of the Century”.

Decades of enhancements have gone well beyond the simple accumulation of wax figures. The multi-faceted “World of Wax” experience has been magnified not only through audio-visual technologies, but also through complementing displays such as the Crown Jewels Theatre, the World War I Field Surgical Hospital Kit, the thousand year old piece of cedar, replica sword of Genghis Khan, and original opera chairs crafted in 1987 for the Prince and Princess of Wales.

www.waxmuseum.bc.ca



Miniature World

Tourist attraction, all ages, featuring animated miniature scenes involving stories of fact, fiction & fantasy!

Miniature World is the greatest little show on earth! Over 85 great little attractions that include the world's smallest operational sawmill, two of the largest doll houses, and one of the longest model railways. See Circus World, Space 2201, Frontier land, Fantasyland and much more!

www.miniatureworld.com

Charter Trip Ideas - Skagit County, WA



Skagit County Wine Tours

Enjoy a relaxing afternoon of winetasting by visiting two or three outstanding Skagit County wineries.

At each locale, you'll meet with the winemakers and enjoy tasting samples of their various wines. A few of the more popular wineries in the area are Challenger Ridge Winery, Eagle Haven Winery and Glacier Peak Winery. Enhance your trip with an on-board wine guide/

advisor, a nutritious box lunch, water and snacks, and perhaps even some locally-made chocolate.



Island Adventures

Washington State's Top Whale Watching tours. The waters around Anacortes are considered to be the best place in the world to view Orca whales. Situated in the rain shadow of the Olympic Mountains, the San Juan and Canadian Gulf Islands provide calm waters, sunny skies, and an incredible backdrop for their whale and wildlife

tours.

They pride themselves as being one of the most experienced and dedicated whale-watching companies in Washington. Because of their very high success rate, Island Adventures was one of the first and only companies to guarantee whale sightings on every tour - but it's their team of highly qualified crew that will make your trip unforgettable! They boast over 100 years of combined experience in the islands, over 4100 days with the whales, and have led excursions for over 80,000 satisfied customers.

www.islandadventurecruises.com



Anacortes Kayak Tours

Experience the secret side of the San Juan Islands.

The waters of Rosario Strait contain some of the most exclusive kayak destinations in the San Juan Islands. As the most conveniently located kayak tour company in the San Juans, they are in a unique position to bring you to wild and scenic shorelines that are inaccessible to most visitors. With no ferry hassles to worry about, all you need to do is sit back, dip your paddle to the water, and enjoy the serenity of the San

Juan Islands.

www.anacorteskayaktours.com



SeaBear Smokehouse

Traditional Northwest Smoked Salmon. Whether you are a visitor to our region, or a resident of the Pacific Northwest, don't miss the best way to enjoy one of the world's great food traditions...Northwest smoked salmon! They've been smoking wild salmon in the traditional Northwest manner since 1957. Tour the Smokehouse, let them ship your gift back home, taste their most popular items, pick up a gift or picnic snack.
www.seabear.com



The Anacortes Chocolate Factory

How about a fun day out at the Anacortes Chocolate Factory! Your group can visit for a candy making class and lunch. They offer a fun filled day of sampling, creating your own chocolate clusters and instruction in candy making. Minimum group is 8 and maximum is 26. Classes begin at 10:30am.

Make your own chocolate clusters. This is a popular project! Attendees get their own bowl of chocolate, which they can blend with assorted nuts, coconut or marshmallows to create their own nut clusters.



Majestic Inn and Spa

Newly remodeled to cater to the needs of every guest, the beautiful Majestic Inn, located in the heart of downtown Anacortes, is a perfect getaway. Nestled in the natural beauty of the Pacific Northwest, surrounded by Evergreen trees and the Puget Sound, Anacortes is the ideal location for shopping, hiking or simply relaxing.

For guests of the Majestic, Anacortes is a great home base for exploration, as well as a destination in itself. Just eight miles south of town is Deception Pass State Park, offering breathtaking views, more than 75,000 feet of salt-water shoreline and a variety of activities such as clamming, crabbing, fishing, boating and swimming.

With the Washington state ferry system operating out of Anacortes, it is easy to hop on a ferry and shop in Friday Harbor on San Juan Island for the day or take a bike tour of Lopez Island. The ferries also journey to Victoria, B.C., so spend the day shopping in Old Towne, visiting the world-famous Butchart Gardens or picnicking in Beacon Hill Park.

In Anacortes itself, historic downtown is home to an abundance of specialty stores, art galleries and antique shops. Locals as well as visitors have many opportunities to mingle in the picturesque town as each season brings its own outdoor festival or celebration.

www.majesticinnandspa.com

Gere-a-Deli

Gere-a-Deli has been feeding Anacortes since 1981. Started by present owner Laurie Gere, the deli has remained a family owned and operated business.

The Gere-a-Deli is located in historic downtown Anacortes in an old brick bank building built in the 1920's. The bright, open dining room has 20 foot ceilings & seating occupancy of 125 people with a remarkable décor of original nostalgic signs.

The locals describe the deli as an institution, the hub of the community. The locals have voted them the best deli soup, salad, business lunch, quick lunch, clam chowder, sandwich, and catering.

They serve homemade traditional family recipes such as Granny Gere's BumbleBerry Cobbler & Grandma Mcphee's Meatloaf along with soups, salads, desserts, breads & rolls, and pastries all which are prepared from scratch daily.

www.gere-a-deli.com



Rock Fish Grille & Anacortes Brewery

Featuring fresh NW cuisine prepared in a wood-fired oven & craft brewed beers made on the premises. Live blues, jazz & roots every week.

www.anacortesrockfish.com

The Antique Shops of Scenic Anacortes

Anacortes has several excellent antique shops, where you can leisurely search for nostalgic treasures. Some of the shops are: Days Gone By Antique Mall, Reflections Antique Mall, The Front Room Unique Collectibles, Left Bank Antiques and Home Sweet Home Antiques.



Hellams Winery & Vineyard

Hellams Vineyard is a family owned and operated wine shop dedicated to offering the best wines from around the Northwest and the world.

Their custom designed, Tuscan-themed wine shop has an old-world feel, from the mosaic tile entry, rust-textured walls, tasting bar made out of wine barrels, to the wine racks crafted from old wine barrel staves.

It is the realization of a dream of owner Jeff Hellam, who worked in the wine industry in the Yakima Valley and whose passion and work ethic allowed him to vault from harvest worker to general manager in less than 18 months. Jeff was also in the first graduation class of the Professional Viticulture Program at WSU Prosser.

They opened their doors in November, 2004, and specialize in Washington wines, although they do their research to bring you the best from all over the world. Their inventory also includes custom crafted local and international beers, and locally crafted artisan cheeses on a seasonal basis.

www.hellamsvineyard.com

Bunnies by the Bay and Glad Dreams Workshop

Tea parties, art classes, complimentary Hareytale tours, trinkets and treasures.

Bunnies By The Bay uses the softest, cuddliest, most snuggly fabrics imaginable to swaddle your precious bundle in a cloud of comfort. Adorable blankets, bibs, coats, and slippers for your wee one with sweet buns. And now you can swaddle yourself in the same incredible softness with Baby Me Too! ...

Take a peek inside the Bunnies By The Bay Glad Dreams Workshop... Shop there for handcrafted One of a Kind Bunnies or some of their friends.... Cheer up your favorite friend with the gift of "Haremones." Plan a scrumptious Tea Party, or Birthday Celebration, and learn the true story of the Bunnies By The Bay.

www.bunniesbythebay.com



Olive Shoppe

The Olive Shoppe Gifts & More is a Gourmet Shop specializing in olives with no artificial preservatives, some local products and items you don't find in many other stores. They have several varieties of olives - home-cured, oil-cured, spicy, hot, very hot, tree ripe and many more. Also some stuffed with garlic, jalapeno, almond, pimento, anchovy, and onion in different brines.

They come from California, Greece, Italy, Spain, France, and other countries. Their Main brands are Adams Ranch, Gills Gourmet Gallery, Alleio and California Harvest.

They carry many products aside from olives as well. Olive Oils from U.S. and around the world, locally made products, such as vinegars, garlicks, mustards, jams, jellies, chutneys, syrups, other items like marinated vegetables, olive pate, tapenades, salsas, pickles, gourmet flavored honeys, the famous Muffuletta Olive Salad from New Orleans. Also glassware, kitchen gadgets, items made of olive wood and many other products from which to choose.

www.oliveshoppe.com

A Class Act Gallery

Featuring exhibitions of painting, sculpture, jewelry, pottery and other artforms from the finest Northwest artists.

www.timwistrom.com



Cascade Candy

Located in historic La Conner, Washington, the Cascade Candy Company was founded in 1991 on the principle of providing an exceptional product at a reasonable price. Their chocolates and candies are absolutely sensational. Their recipes are time-proven dating back to 1902

along with some incredible creations developed in their own licensed kitchen.

All their products are made using only the finest natural ingredients and Guittard Chocolates from San Francisco. The Cascade Candy Company uses no artificial ingredients or preservatives in any of their products.

www.cascadecandy.com



La Conner Brewing Company

Unique Northwest-style brewpub featuring wood-fired pizzas and other specialties served with their award-winning beers! Fireplace and garden terrace. Family friendly.



The Wood Merchant

The Wood Merchant Gallery represents over 200 Northwest woodworkers. They feature handmade gifts, furniture, rocking chairs, and jewelry boxes.

www.woodmerchant.com



Museum of Northwest Art

Museum of Northwest Art (MoNA) features exhibits and educational programs. Visit the Museum Store for great gift ideas. Open daily from 10 am – 5 pm.

www.museumofnwart



La Conner Quilt Museum

One of only 12 quilt museums in the U.S.A. In the historic Gaches Mansion. Shows change every two months from around the country and the world. Open Wednesday –Saturday 11 am – 4 pm, and Sunday Noon – 4 pm. Admission \$5. Members and children under 12 free. Summer hours open till 5:00 pm.

www.laconnerquilts.com



Skagit County Historical Museum

Come to the top of the hill where Skagit County history comes to life! Three large galleries, lots of hands-on family fun activities and magnificent views from the deck. Open Tuesday – Sunday 11 am – 5 pm. Admission charged.

www.skagitcounty.net/museum

Deception Pass Tours

Explore Deception Pass aboard the Island Whaler. Hourly tours.

www.deceptionpasstours.com

Walking Tour La Conner Sculpture Exhibition

www.townoflaconner.org

Other Northwest Destinations



Leavenworth, WA

Come and enjoy the spring wildflowers, 300 days of sunshine, year round festivals, world class recreation, arts, spectacular scenery, 90+ specialty shops, and great dining options. Your award winning Bavarian village welcomes you!

www.leavenworth.org

The vast area surrounding Leavenworth, Lake Wenatchee and Plain, including the world-famous Alpine Lakes Wilderness, provides recreational enthusiasts with four seasons of activity and adventure. From snowmobiling, cross-county skiing to hiking or rock climbing, not to mention biking and golf - there's always something to do and see in and around Leavenworth.

Three hour ride from Bellingham and Anacortes and two and a half hour ride from Mount Vernon (depending on traffic).



Ste Michelle Winery - Woodinville, WA

Enjoy Washington's oldest and most acclaimed winery! Chateau Ste Michelle combines Old World winemaking tradition with New World innovation, earning them multiple "Winery of the Year" awards. Tour their wine cellar and barrel aging room, along with premium tasting experiences. Their knowledgeable staff is eager to share their passion for wine, along with some history of the

winery, the grounds, and other area attractions. The trip also includes a visit to their renowned glass art gallery.

www.ste-michelle.com

Two hour ride from Bellingham and Anacortes and one and a half hour ride from Mount Vernon (depending on traffic).



Charlie's Safari, Lacey WA

Charlie's Safari is the premier indoor family fun center in the Pacific Northwest! This is a faith-based business that

is dedicated to serve and give back to the community. They feature an indoor safari-themed family fun center with 22,000 sq. ft. of family entertainment, including:

Pride Rock Mini-Golf

Big Game Hunt Laser Tag

AAA Reserve (Huge Play Structure)

Big Five Pouncing Pit (Bounce)

Quiet rooms for parents

The Watering Hole (Concession Court)

Arcade with Prizes!

Big Five Party Rooms

Tike Village for ages 4 and under

And plenty more!

www.charliessafari.com



Capitol Building, Olympia WA

Surrounded by over 30 beautifully landscaped acres that includes seasonal floral displays, this State Capitol is home to many historic buildings including the Temple of Justice that was completed in 1920, the exquisite Executive Mansion, the Old Capitol Building that was constructed in 1892, and the Capitol Conservatory that was constructed in 1939 and contains tropical plants, as well as produces bedding plants for the Capitol Campus.

www.ga.wa.gov/Visitor/index.html

Three hour ride from Bellingham and Anacortes and two and a half hour ride from Mount Vernon (depending on traffic).



BELLAIR CHARTERS • 1416 WHITEHORN ST, FERNDALE WA 98248

PH: 866.235.5247 / 360.380.8800 • FAX: 360.380.1538

WWW.BELLAIRCHARTERS.COM



Bellair Charters • 1-866-BELLAIR • www.bellaircharters.com